



JSF

TECHNOLOGIES

SOLAR TRAFFIC SOLUTIONS

TURNKEY ILLUMINATION FOR A
SAFER URBAN ENVIRONMENT



RMS SERIES SOLAR LED LIGHTING



STAND-ALONE POWER

Say goodbye to trenching, cabling and utility bills



EASY INSTALLATION

Minimal site disruption and downtime



ENHANCED PUBLIC SAFETY

Standalone systems are immune to power outages



ECO-FRIENDLY

Long lasting, fully recyclable batteries eliminate reliance on grid power



ECM CONNECT™

A suite of optional wireless control and monitoring options



UL LISTED SYSTEMS

All systems are tested and certified for safety by Underwriters Laboratories



ADVANTAGES

> Solutions Focused

Lighting design? Happy to help. Structural calculations? Our pleasure. Security cameras? Motion sensor activation? Give us a call today!

> Proven Reliability

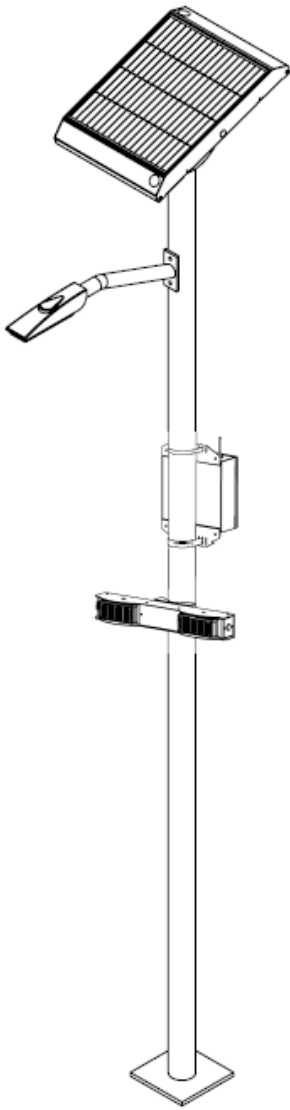
Over 10,000 systems across **Noth America** and around the world. From the Arizona desert to the snowy mountains of Canada, we have you covered.

> Exceptional Value

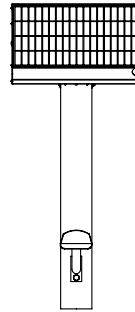
All systems are proudly made in North America and backed by an industry leading system and battery warranty. A multitude of sizing options ensure that you only pay for the system your project requires.

RMS SERIES & RRFB

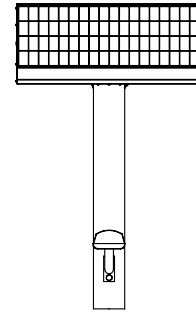
A sleek architectural design and year-round reliability make this series ideal for a variety of outdoor lighting applications.



70W



100W



170W

Array Sizes (W):	70, 100, 170
Battery Capacity:	54 Ah to 180 Ah
Operating Temperature:	-40°C to 80°C (-40°F to 176°F)
Smart Controller:	LED Dimming / Battery Charging / Data Logging Optional wireless control and monitoring
ECM Connect™ Profiles:	
IES Lighting	Ped Activated, Dusk to Dawn, Custom
Distribution: LED	I, II, III, IV
Colour Temperature:	2700K to 5000K

Put our **expertise in solar lighting** to work on your next project.

For more information or a consultation with one of our solar lighting experts, please email sales@jsftechnologies.com



AB-9207-AC

RRFB Rectangular Rapid Flashing Beacon



AC ENCLOSURE

Enclosure Material	0.08" Type 5052 H-32 aluminum
Enclosure Dimensions (Small)	12" x 12" x 4" (30 x 30 x 10cm)*
Enclosure Dimensions (Large)	16" x 14" x 8" (41 x 36 x 20cm)*
Standards	UL 508 Type 3R, 4, 4X, 12, and 13 CSA Type 3R, 4, 4X, 12, and 13
Compliance	NEMA Type 3R, 4, 4X, 12 and 13 JIC EGP-1-1967 IEC 60529, IP66
Enclosure Colors	Aluminum, Black, Green or Yellow (Custom Colors Available)

AC CONVERTER BRICK SPECIFICATIONS

Dimensions	6.375" x 1.625" x 1.25" @ 0.9 lbs. (16.2 x 4.1 x 15.9cm @ 0.4 kg)*
Power Supply Rating	120 VAC to 15 VDC Class 2 Supply
Standards	IP67, CE Certified, UL Recognised

SYSTEM PROTECTION

Over Current Protection	1.8 Amp PTC auto-reset fuse
Self Monitoring	Visual notification of sub-optimal operation

SINGLE RRFB LIGHTBAR

Standard Followed	ITE VTCOSH-STD 2005, SAE J595
RRFB Housing Material	A5052 Sheet Aluminum (Lightbar) 6061-T6 Aluminum (Mount)
LED Size	3" x 7" (76.2 x 177.8mm)* x two per lightbar
Tell Tale LED Size	1" x 2" (25.5 x 51mm)*
Housing Dimensions	24" x 3.0625" x 3.75" (61cm x 7.75cm x 9.5cm)*
Std. LED Color Options	Amber or Red (custom colors available)
RRFB Mount	Universal Jaw Mount Telespar Jaw Mount Side Mount Bracket Jaw Mount

COMMUNICATION

Band of Operation	ISM Band (902-928 MHz)
Range	Up to 0.5 miles (800 m) with line of sight
Network Addresses	16 unique addresses to avoid interference between multiple crosswalk locations
Compatibility	Can communicate with other AB units

SYSTEM OPTIONS

LED Housing Colors	Black, Green or Yellow (Custom colors available)
--------------------	---

SYSTEM OVERVIEW

Compliance	FHWA MUTCD compliant
Standard (Std.) Operation	Pedestrian Activated via push button or JSFT remote transmitters
Flash Pattern Options	RRFB Pattern (WW + S) FHWA IA-21 Approved
Activation Duration	Variable from 5 seconds to 4 hours
Std. Operating Temperature	-40°F to +176°F (-40°C to +80°C)
System Voltage	12 VDC
Packaged Dimensions	Varies depending on configuration and installation method

SIGNAL HEAD AND SOLAR ENGINE AVAILABLE WITH STANDARD COLOURS; YELLOW, BLACK, OR GREEN. CUSTOM COLOURS ARE ALWAYS AVAILABLE.



SALES

Toll-Free 1.800.990.2454
sales@jsftech.com

SUPPORT

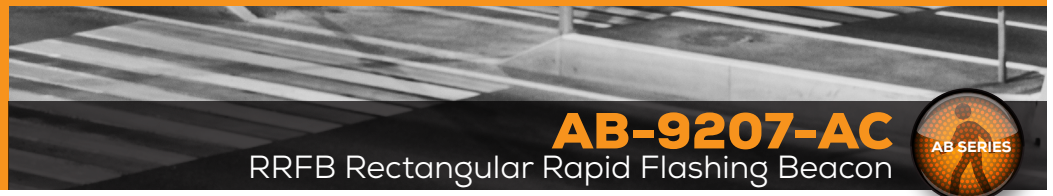
Toll-Free 1.800.990.2454
support@jsftech.com

ADDRESS

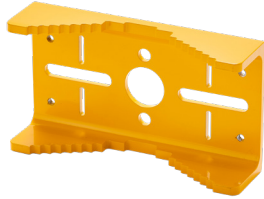
6582 Bryn Road,
Victoria, BC V8M 1X6

WARRANTY 5-year Limited Warranty for defects in workmanship and materials (excludes batteries and vandalism)

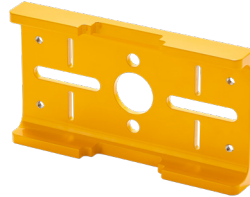
*All measurements and weights are approximate



AB-9207-AC
RRFB Rectangular Rapid Flashing Beacon



UNIVERSAL JAW MOUNT

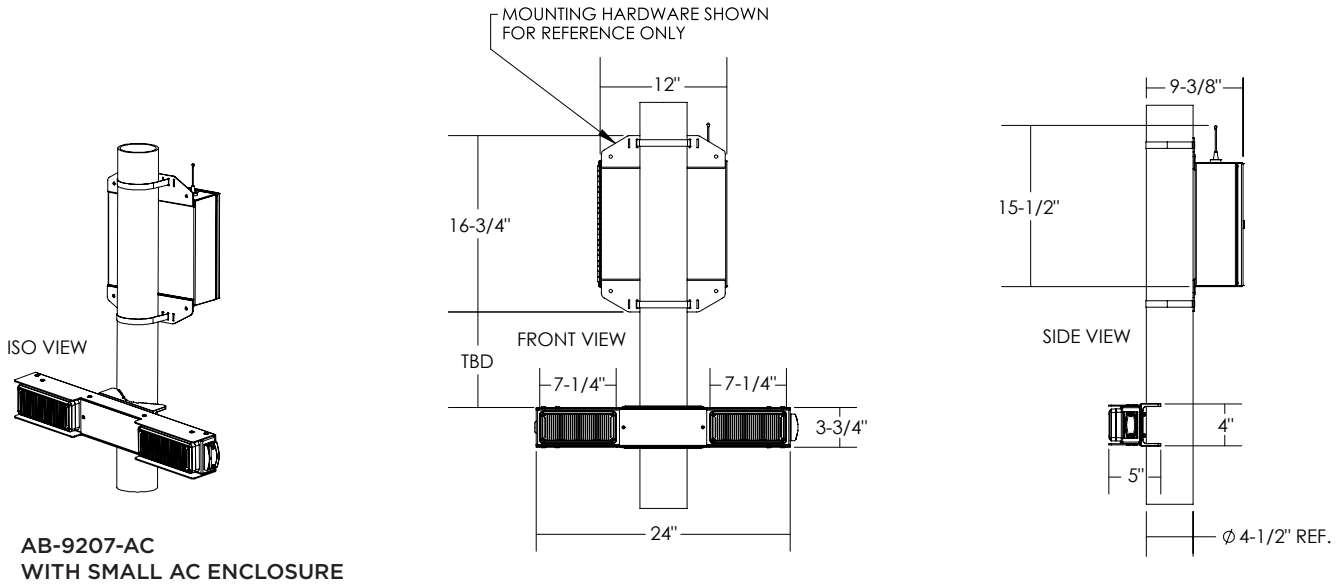


TELESPAR JAW MOUNT

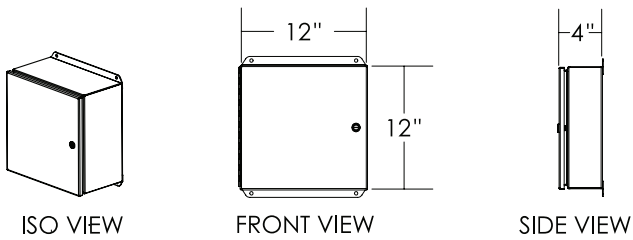


SIDE MOUNT BRACKET JAW MOUNT

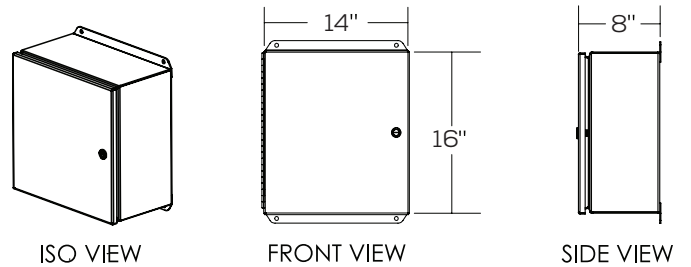
RRFB LIGHTBAR MOUNTING



SMALL AC ENCLOSURE



LARGE AC ENCLOSURE



SYSTEM DRAWINGS